



EXPANDED LEARNING OPPORTUNITIES

Request for Proposals

Research Orientation

March 1, 2022



The Children's Services Council of Palm Beach County provides significant funding for Prime Time's overall operations. The Palm Beach County Youth Services Department provides support for Prime Time's Middle School Out-of-School Time Initiative.





Part 1: The Application



Evaluation Questions in the Application

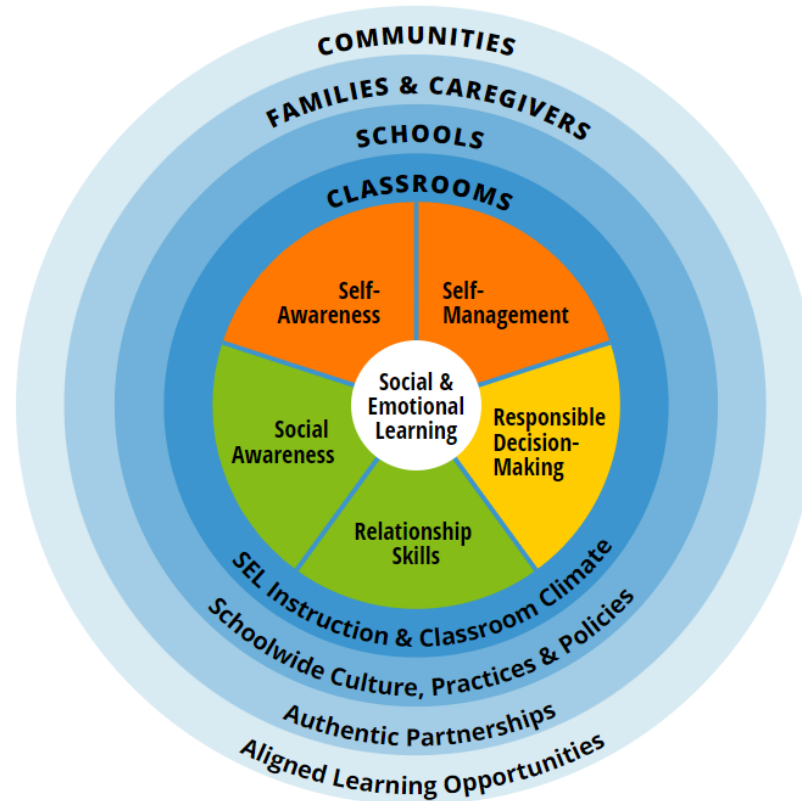
1. What outcomes (or benefits) for the children or youth do you anticipate as a result of your program or proposed activities?
2. What social and emotional skills do you expect will develop or grow stronger because of your program or proposed activities?
3. Please briefly describe the key ingredients of your program that will help achieve the outcomes listed above.
4. Has your program been evaluated in the past? If so, what were the conclusions of the evaluation?

1. Outcomes or Benefits

American Institutes for Research (2015). Supporting social and emotional development through quality afterschool programs. *Beyond the bell: Research to practice in the afterschool and expanded learning field*. Retrieved from: <https://www.air.org/sites/default/files/downloads/report/Social-and-Emotional-Development-Afterschool-Programs.pdf>. (12 pgs.)

Durlak, J. A., & Weissberg, R. P. (2013). Afterschool programs that follow evidence-based practices to promote social and emotional development are effective. *Big views forward: A compendium on expanded learning*. Retrieved from: http://www.expandinglearning.org/docs/Durlak&Weissberg_Final.pdf. (6 pgs.)

2. Social & Emotional Skills: CASEL Wheel



<https://casel.org/fundamentals-of-sel/what-is-the-casel-framework/>

<https://www.youtube.com/watch?v=jgKNn-JcYPE>

Self-management

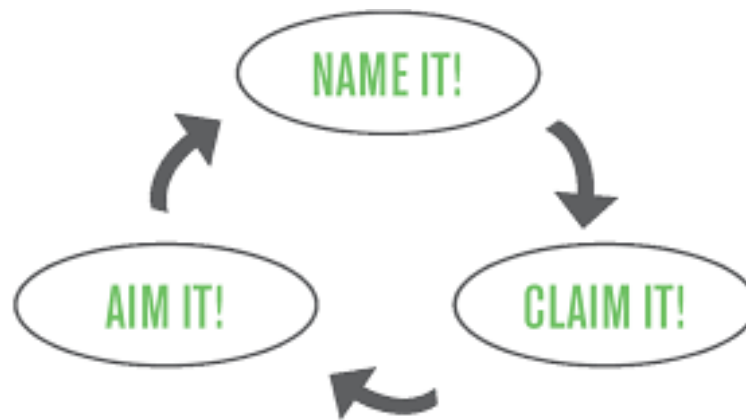
The abilities to manage one's emotions, thoughts and behaviors effectively in different situations and to achieve goals and aspirations. This includes the capacities to delay gratification, manage stress, and feel motivation and agency to accomplish personal and collective goals.

3. Key Ingredients of Your Program

Write this statement:

We expect these **evidence-based program practices** to build **these specific SEL skills** in youth.

Evidence-based *practices* do not necessarily mean an evidence-based *curriculum*, which is not required. You are almost certainly using some evidence-based practices already, and explicitly **naming them** will strengthen your application.





Key Ingredients of Your Program

Evidence-based program practices:

Palm Beach County Quality Standards for Afterschool (esp. standards 2-4):

- Standard 2 - Supportive ongoing relationships
- Standard 3 - Positive and inclusive environment
- Standard 4 - Challenging learning experiences

<https://primetimepbc.org/the-ost-program/quality-standards-for-afterschool/>

PBC-Program Quality Assessment (if you've been assessed in the past):

Which items or scales best describe the strategies you use in your program?

Key Ingredients of Your Program

1. Student-Centered Discipline
2. Teacher Language
3. Responsibility and Choice
4. Warmth and Support
5. Cooperative Learning
6. Classroom Discussions
7. Self-Reflection and Self-Assessment
8. Balanced Instruction
9. Academic Press and Expectations
10. Competence Building—Modeling, Practicing, Feedback, Coaching

Additional evidence-based program practices...

Teaching the Whole Child: Instructional Practices That Support Social-Emotional Learning in Three Teacher Evaluation Frameworks

[https://gtlcenter.org/sites/default/files/Teaching theWholeChild.pdf](https://gtlcenter.org/sites/default/files/Teaching%20theWholeChild.pdf)

Designed for the school-day classroom; will need to select only relevant practices and adapt them for OST.

4. Past Evaluation

Data *your program* collected:

Good

- Family survey, interviews or focus groups
- Youth survey, interviews or focus groups

Data collected by an objective entity *outside* your program:

Even
Better

- PBC-Program Quality Assessment scores (Prime Time)
- Data from a university research partner
- Youth grades, attendance, behavior

How Compelling Are Your Evaluation Results?

Interesting:

- Informal testimonials from youth who said they enjoyed the activity

Convincing:

- From a survey your program administered*, results indicating that families saw an improvement in youth skills, grades, behavior, etc. following the activity
- From a focus group your program administered, results indicating youth perceived specific benefits of the activity
- Palm Beach County - Program Quality Assessment results indicating your observed activity was of good quality

Compelling:

- From an evaluation by an objective outside entity, results indicating that youth skills, grades, behavior, etc. improved after the activity, compared to before

**Does not have to be administered as part of a Prime Time contract.*



Part 2:

Evaluation/Impact Data Prime Time Will Provide to Contracted ELOs

Data you will receive:

- Your scores from the Palm Beach County Program Quality Assessment (PBC-PQA)
- Results of “Adult Perspectives on Youth Engagement” surveys regarding your ELO (*by May 31*)
- Results of youth focus group regarding your ELO (if applicable)

Part 3: Required Reporting for Contracted ELOs

In one of your summer monthly reports (June, July or August), include responses to the following data reflection questions:

1. (Required) Based on your PBC-PQA improvement plan goals and your survey data, in what ways did you **succeed** this program year?
2. (Required) Based on your PBC-PQA improvement plan goals and your survey data, what do you need to **work on** during the next program year?
3. (Optional) A best practice or challenge I want to explore further with my staff
4. (Optional) A best practice or challenge I want to explore further with Prime Time
5. (Optional) A best practice or challenge I want to explore further with other ELO providers



Questions?

Luisa Vincent

lvincent@primetimepbc.org